



For sectional doors up to 12.5 m² and up-and-over garage doors up to 11.8 m².
230 Vac irreversible electromechanical gear motor, for residential use, with belt drive, 24 Vdc motor, with magnetic encoder.

Complete version of the guide in 3x1 m sections.

Rapid installation - anywhere!

The adjustable head, cord-type release and cable-controlled, step-by-step release can be fitted in any part of the garage in order to actuate the system without a remote control device and without the need to install wall-mounted control units!

Guaranteed savings and respect for the environment:

with the connection to the mains in standby mode the control unit with radio connected consumes just 0.8 W (SPIN30) and 1.2 W (SPIN40); when connected to a battery or to the Solemyo kit, consumption in standby mode is reduced to 0.036 W.

User-friendly thanks to the BlueBUS system:

which enables connection by means of just two wires between the control unit and pair of photocells.

Safe: obstacle detection system and automatic programming of the working times; motor absorption is monitored during movement, self-diagnosis by means of a flashing light and courtesy light. Acceleration and deceleration can be adjusted at the beginning and end of each opening and closing manoeuvre. Can be connected with last generation sensitive edges 8.2 KOhm.

Luminous: 40 W lamp E27 that can be used as garage lightening.

Code	Description	Pack/pallet
SPIN30	Irreversible, 230 Vac, 24 Vdc motor, with incorporated control unit, 800 N. Complete with guide in three 1 m-sections	15
SPIN40	Irreversible, 230 Vac, 24 Vdc motor, with incorporated control unit, 1000 N. Complete with guide in three 1 m-sections	15

Technical specifications

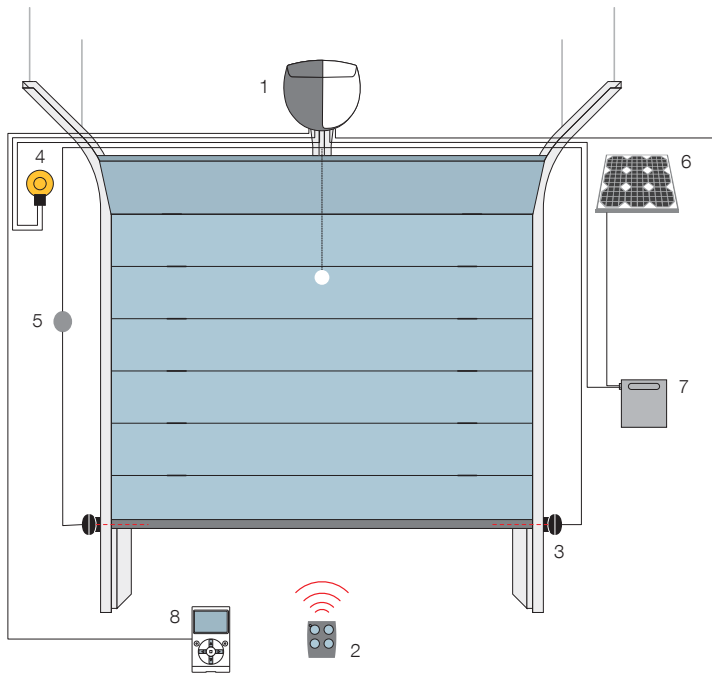
Code	SPIN30	SPIN40
Electrical data		
Power supply (Vac 50/60 Hz)	230	
Absorption (A)	1.3	1.4
Power (W)	350	370
Performance data		
Speed (m/s)	0.20	
Force (N)	800	1000
Work cycle (cycles/day)	50	
Dimensional and general data		
Protection level (IP)	40	
Working temp. (°C Min/Max)	-20 ÷ +50	
Dimensions (mm)	311x327x105 h	
Weight (kg)	3.6	4.7

Utilisation limits

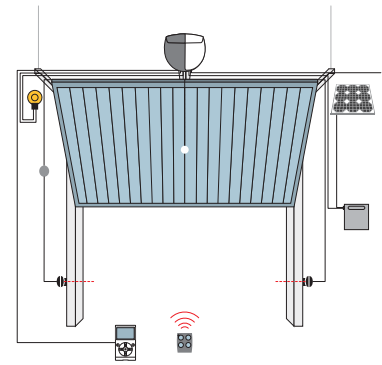
Using the maximum travel

	Non-projecting up-and-over door		Projecting up-and-over door		Sectional	
	H	L	H	L	H	L
SPIN30	2.2 m	4.2 m	2.8 m	4.2 m	2.4 m	4.4 m
SPIN40	2.2 m	4.2 m	2.8 m	4.2 m	2.4 m	5.2 m

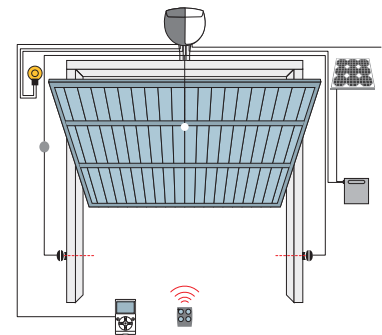
Sectional



Non-projecting up-and-over door



Projecting up-and-over door



1. Spinbus 2. Transmitter 3. Photocells 4. Flashing light 5. Digital or key switches
6. SYP* solar panel 7. PSY24* battery box 8. O-View* multifunction display.
*Optional connection to Solemyo and Opera systems.

Accessories



SNA3
Spare control unit
for SPIN30/SN6031.



SNA4
Spare control unit
for SPIN40/SN6041.



PS124
24 V battery
with integrated
battery charger.
Pc/pack 1



SPA2
Kit for unlocking from
the outside with cable.
Pc/pack 1



SPA5
Oscillating arm sliding
on bearings with optimised
structure for projecting
up-and-over doors.
Pc/pack 1



SPA6
Large 585 mm long
connecting arm.
Pc/pack 1



SPA7
Kit of two additional
fixing brackets.
Pc/pack 2



SNA16
Quick-connect brackets
for ceiling mounting.
Pc/pack 10



TMF
Pair of photocells
for optical type
sensitive edge.
Pc/pack 1



TS
Signboard.
Pc/pack 1

Solemyo system



The solar power kit Solemyo to automate gates, garage doors or barrier gates, including those located far from the power mains and without the need for costly and invasive excavation work. See pages 186/187

Opera system



The innovative Opera system enables the installer to manage, program and control automation systems, also remotely, simply and safely, with significant savings in time. See pages 140/141



Code	Description	Pack/pallet
SN6031	Irreversible, 230 Vac, 24 Vdc motor, with incorporated control unit, 800 N	15
SN6041	Irreversible, 230 Vac, 24 Vdc motor, with incorporated control unit, 1000 N	15

Code	Description	Pack/pallet
SNA30	Preassembled 3 m guide	1
SNA31	1 m extension for guide SNA30	1

For sectional doors up to 17.5 m² and up-and-over garage doors up to 14.7 m².

230 Vac irreversible electromechanical gear motor, for residential use, with belt drive, 24 Vdc motor, with magnetic encoder.

To use with the SNA30 - SNA31 guides.

Rapid installation - anywhere!

The adjustable head, cord-type release and cable-controlled, step-by-step release can be fitted in any part of the garage in order to actuate the system without a remote control device and without the need to install wall-mounted control units!

Guaranteed savings and respect for the environment:

when connected to the mains on standby the control unit with radio connected consumes just 0.8 W (SN6031) and 1.2 W (SN6041); when connected to a battery or to the Solemyo kit, consumption in standby mode is reduced to 0.036 W.

User-friendly thanks to the BlueBUS system:

which enables connection by means of just two wires between the control unit and pair of photocells.

Safe: obstacle detection system and automatic programming of the working times; motor absorption is monitored during movement, self-diagnosis by means of a flashing light and courtesy light. Acceleration and deceleration can be adjusted at the beginning and end of each opening and closing manoeuvre. Can be connected with last generation sensitive edges 8.2 KOhm.

Luminous: 40 W lamp E27 that can be used as garage lightening.

Technical specifications

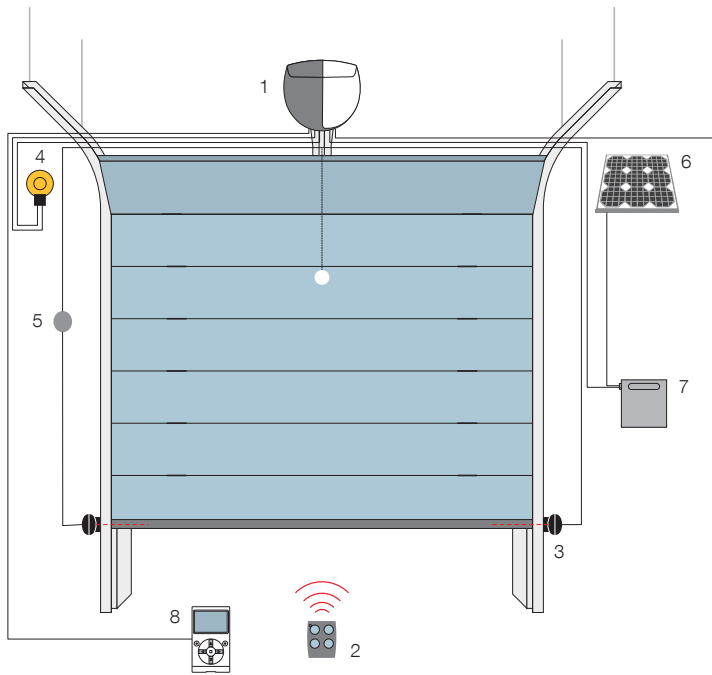
Code	SN6031	SN6041
Electrical data		
Power supply (Vac 50/60 Hz)	230	
Absorption (A)	1.3	1.4
Power (W)	350	370
Performance data		
Speed (m/s)	0.20	
Force (N)	800	1000
Work cycle (cycles/day)	50	
Dimensional and general data		
Protection level (IP)	40	
Working temp. (°C Min/Max)	-20 ÷ +50	
Dimensions (mm)	311x327x105 h	
Weight (kg)	3.6	4.7

Utilisation limits

Using the maximum travel

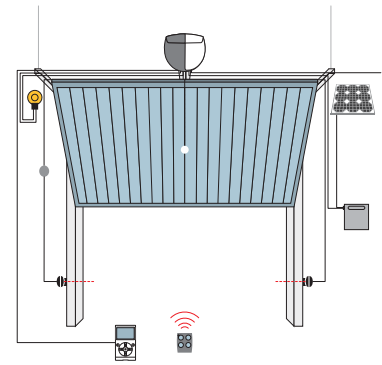
	Non-projecting up-and-over door		Projecting up-and-over door		Sectional	
	H	L	H	L	H	L
SN6031 with SNA30	2.2 m	4.2 m	2.8 m	4.2 m	2.4 m	5 m
SN6041 with SNA30	2.2 m	4.2 m	2.8 m	4.2 m	2.4 m	5.2 m
SN6031 with SNA30 + SNA31	3.2 m	2.9 m	3.5 m	3.4 m	3.4 m	3.5 m
SN6041 with SNA30 + SNA31	3.2 m	4.2 m	3.5 m	4.2 m	3.4 m	5.2 m

Sectional

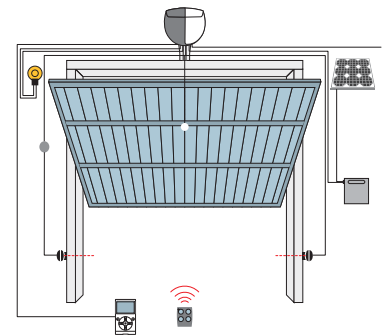


1. Spinbus 2. Transmitter 3. Photocells 4. Flashing light 5. Digital or key switches
6. SYP* solar panel 7. PSY24* battery box 8. O-View* multifunction display.
*Optional connection to Solemyo and Opera systems.

Non-projecting up-and-over door



Projecting up-and-over door



Accessories



SNA3
Spare control unit
for SPIN30/SN6031.



SNA4
Spare control unit
for SPIN40/SN6041.



PS124
24 V battery
with integrated
battery charger.
Pc/pack 1



SPA2
Kit for unlocking from
the outside with cable.
Pc/pack 1



SPA5
Oscillating arm sliding
on bearings with optimised
structure for projecting
up-and-over doors.
Pc/pack 1



SPA6
Large 585 mm long
connecting arm.
Pc/pack 1



SPA7
Kit of two additional
fixing brackets.
Pc/pack 2



SNA16
Quick-connect brackets
for ceiling mounting.
Pc/pack 10



TMF
Pair of photocells
for optical type
sensitive edge.
Pc/pack 1



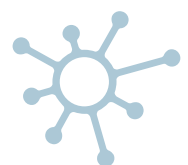
TS
Signboard.
Pc/pack 1

Solemyo system



The solar power kit Solemyo to automate gates, garage doors or barrier gates, including those located far from the power mains and without the need for costly and invasive excavation work. See pages 186/187

Opera system



The innovative Opera system enables the installer to manage, program and control automation systems, also remotely, simply and safely, with significant savings in time. See pages 140/141